



100-10-0178
LMX150™ System



* GNSS is optional



100-60-0058 LMX® Series ATA Shipping Case
(includes 100-60-0059 DVL Bag)



100-60-0066 Deluxe
Display Unit Carrying Case



100-60-0059 Soft-sided
Display Unit & GPR
Accessories Carry Bag



100-55-0023 Spare Battery



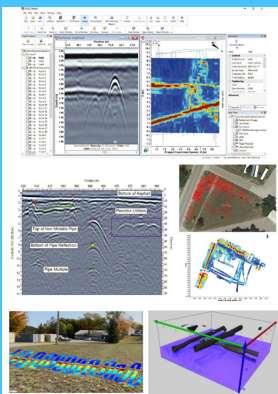
100-55-0028
Spare Battery Charger



100-54-0160
100-54-0160-RTK
100-22-0124

LMX-SG Package
LMX-SG with RTK Package
Geode RTK Upgrade

EKKO_Project™ GPR Analysis Software



- 100-11-0130** Core Bundle
- 100-11-0131** Examine Bundle
- 100-11-0132** Reveal Bundle
- 100-11-0133** Suite Bundle
- 100-11-0134** 3D Reveal Bundle
- 100-11-0135** 3D Suite Bundle

Display Unit Tray Knob Cap and Screws (2)



Display Unit Cable
Jack Screws (2)
and Shims (2)



Sensors Support Straps (4)



Safety Locking Pin (1)



Hex Standoffs (4)



100-54-0154 LMX® Spare Parts Kit
(One included with every system)

Copyright © 2025 Radiodetection Ltd. All rights reserved. Radiodetection is a subsidiary of SPX Technologies, Inc. Sensors & Software, LMX, LMX150 and EKKO_Project are either trademarks or registered trademarks of Radiodetection in the United States and / or other countries. Geode is a recognized trademark of Juniper Systems, Inc. Due to a policy of continued development, we reserve the right to alter or amend any published specification without notice. This document may not be copied, reproduced, transmitted, modified or used, in whole or in part, without the prior written consent of Radiodetection Ltd.