

**SENSORS & SOFTWARE**  
from RADIODETECTION



**LMX150™**  
FINDAR® GPR

# Locate buried evidence



Suspect critical forensic evidence  
may be buried?

Looking for a non-destructive method  
to search large areas?

Need to find clandestine graves,  
weapons or other evidence?

If so, LMX150™ FINDAR® GPR  
is for you.



# The LMX150™ FINDAR® advantage



LMX150 FINDAR enables law enforcement to **quickly and effectively** search for evidence buried under the ground

- LMX150 FINDAR uses ground penetrating radar technology to rapidly image the subsurface
- The intuitive user interface guides investigators through a systematic grid search
- 3D images are generated on-site in seconds pinpointing the position and depth of potential evidence
- Real time images allow decisions to be made on-site. Areas of interest can be identified and excavated immediately





# LMX150 FINDAR system overview



## High visibility touch screen display unit

- Free lifetime system software updates
- User selectable languages
- US Standard and Metric units



## On-site Reports

- Produce instant on-site reports from your display unit



## USB

- USB for easy data transfer



## Integrated GPS

- Integrated GPS receiver for geo-referencing data



## Wi-Fi

- Built-in Wi-Fi capability



## Compact Lightweight Fiberglass Cart Frame

- No metal parts that would interfere with GPR signals
- Rugged, all-terrain cart with integrated odometer, easily maneuverable over any surface



## Optional External GNSS

- For high accuracy positioning and mapping
- All-in-one LMX150 FINDAR SG bundle available



## Lead Acid Gel Cell Battery

- Long lasting
- Swappable
- Locally available



## High Resolution GPR Sensor

- Innovative ultra-wideband (UWB) 500MHz GPR antenna
- DynaT™ for Dynamic Target enhancement
- Scanning depth up to 3m (10ft)



## Odometer

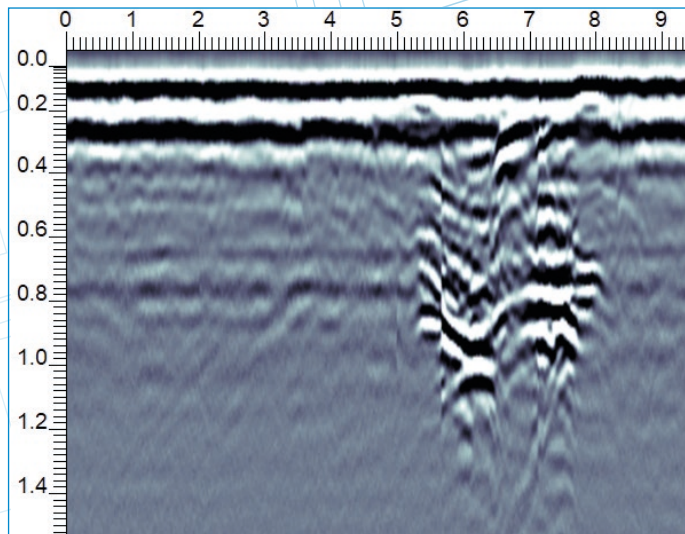
- To collect data at equal intervals





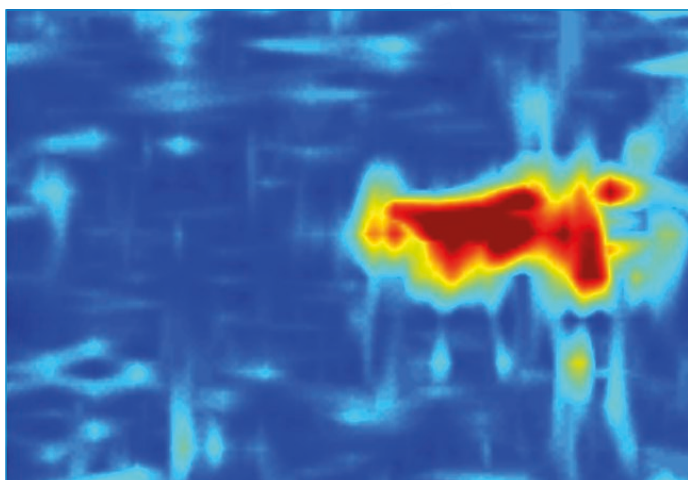
# Locate evidence in real time

- Clandestine graves
- Drugs or money buried in metal or plastic containers
- Buried weapons and ammunition stashes



## Line mode

Collect cross-sectional lines for reconnaissance purposes. Identify and focus your search on relevant areas.



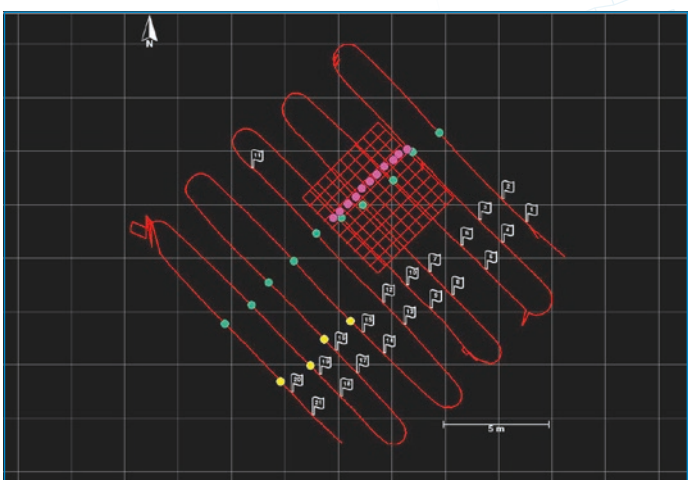
## 3D Depth slicing

After collecting a grid of data, generate depth slice images on-site. Pinpoint the position and depth of potential targets.



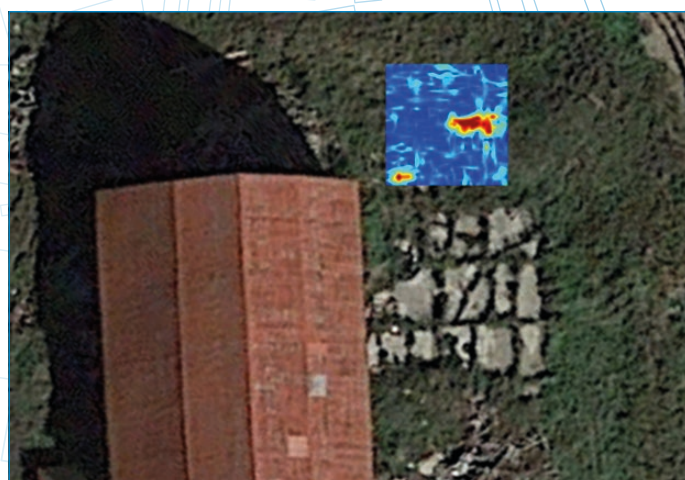
## Field interpretations

Classify targets in real time with field interpretations. Use the touchscreen to color-code each target as it is located.



## Map View on-site display

Using the optional external GPS, identified targets are displayed on the screen in a plan map view.

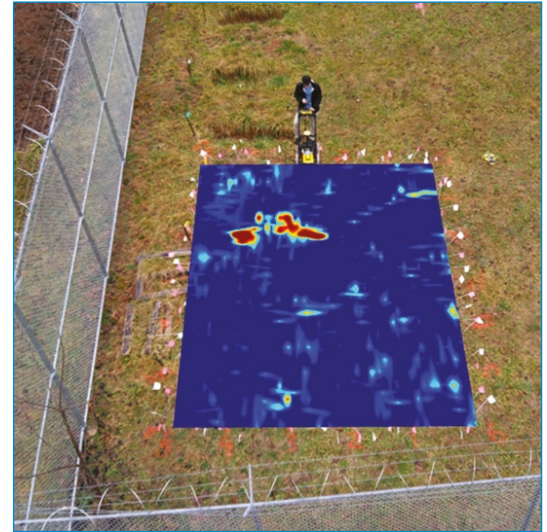
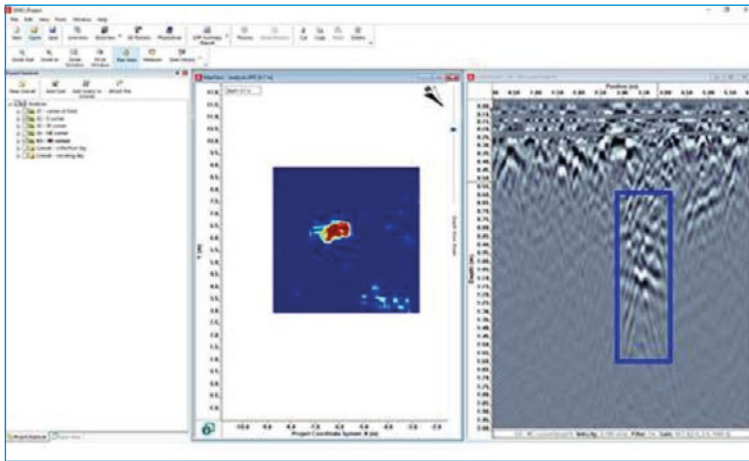


## Geo-referenced output

Using the optional EKKO\_Project™ software, display your survey lines, depth slices and interpretations in Google Earth™ and other similar geo-referenced platforms.

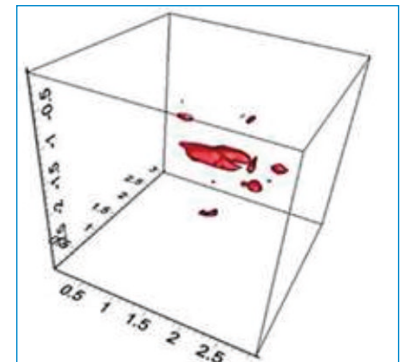
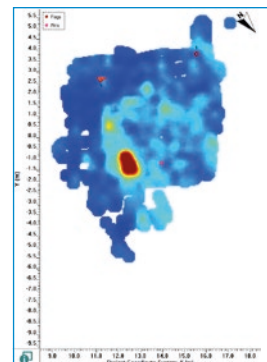
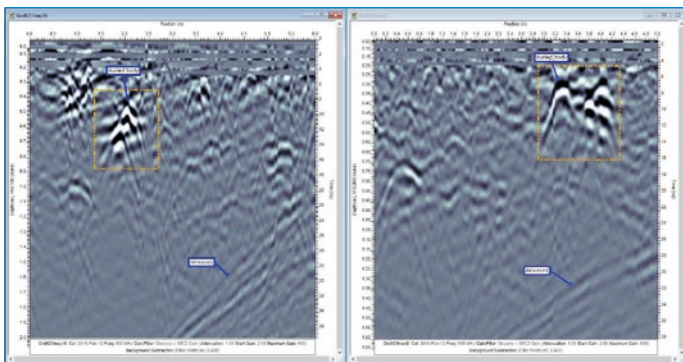
# EKKO\_Project Software

Visualize, Understand and Report your GPR results with the optional EKKO\_Project PC Software



## Core

Organize your GPR data, photos and other files and save as a single project file. Easily create PDF reports of your findings.



**Examine** (Cross-sections)

**Reveal** (Depth Slices)

**3D Reveal** (3D Visualization)

## Specifications

Weight & Dimensions	
<b>Size:</b> 115 x 55 x 90 cm (45 x 21 x 35 in)	
<b>Weight:</b> 19 kg (41 lb) (including battery)	
<b>Display Unit size:</b> 21 cm (8 in) diagonal	
Power	
12 volt sealed lead acid gel cell	
<b>Battery Capacity:</b> 9.0 Ah	<b>Battery Weight:</b> 3.6 kg (7.9 lbs)
<b>Battery Life:</b> 4-6 hours	<b>Charger:</b> 110-240V

Environmental & Temperatures	
Ruggedized, environmentally sealed unit and connections	
IP65	Operating temperature range: -20°C to +50°C (-4°F to 122°F)
Regulatory Specifications	
Meets FCC 15.509, IC RSS-220 and ETSI EN-302066	
Data Storage	Depth
230 km (143 miles) of data	Up to 3 meters (10 feet)

## Useful resources to make the most of your LMX150 FINDAR GPR

- [Webinars and free online resources](#)
- [Learn more about our training offerings](#)





## Our Mission

Provide best in class equipment and solutions, to prevent damage to critical infrastructure, manage assets and protect lives.

## Our Vision

To be the world's leader in the management of critical infrastructure and utilities.

## Our Locations



### USA

Raymond, ME  
Kearneysville, WV

### Canada

Mississauga, ON



### Europe

United Kingdom **HQ**  
France  
Germany  
The Netherlands



### Asia Pacific

India  
Hong Kong  
Australia

Visit: [www.sensoft.ca](http://www.sensoft.ca) Follow us on:    

Scan for more information

