

SENSORS & SOFTWARE® 
from **RADIODETECTION**

LMX150™
FINDAR® GPR

Utility locating with GPR made simple

Trying to avoid dangerous and costly
hits to critical utilities?

Want to find more non-metallic utilities
at your job site?

Locating shallow, small utilities giving
you trouble?

If so, LMX150™ FINDAR® GPR
is for you.

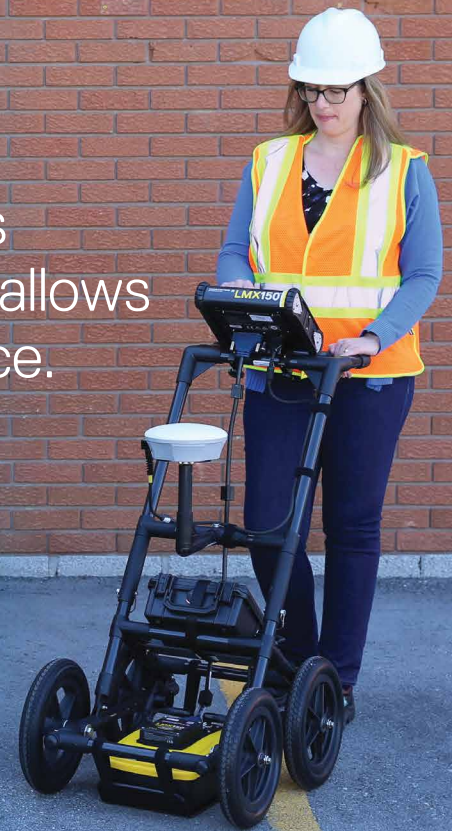


SPX 
TECHNOLOGIES

Overview

LMX150™ FINDAR® GPR complements traditional pipe and cable locators and allows you to locate targets below the surface.

- Metal utilities, including pipes and cables
- Non-metallic pipes, including PVC and asbestos cement
- Concrete storm and sewer systems
- Utilities where installed tracer wiring has failed
- Underground storage tanks and drainage tiles
- Septic system components
- Fiber optic cables
- Non-utility structures such as vaults, foundation walls and concrete pads



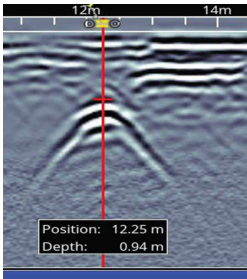
- High visibility touch screen display unit**
 - Free lifetime system software updates
 - User selectable languages
 - US Standard and Metric units
- On-site Reports**
 - Produce instant on-site reports from your display unit
- USB**
 - USB for easy data transfer
- Integrated GPS**
 - Integrated GPS receiver for geo-referencing data
- Wi-Fi**
 - Built-in Wi-Fi capability
- Compact Lightweight Fiberglass Cart Frame**
 - No metal parts that would interfere with GPR signals
 - Rugged, all-terrain cart with integrated odometer, easily maneuverable over any surface
- Optional External GPS**
 - For high accuracy positioning and mapping
- Lead Acid Gel Cell Battery**
 - Long lasting
 - Swappable
 - Locally available
- High Resolution GPR Sensor**
 - Patented ultra-wideband (UWB) 500MHz GPR antenna
 - DynaT™ for Dynamic Target enhancement
 - Scanning depth up to 3m (10 ft)
- Odometer**
 - To collect data at equal intervals

LMX150™ FINDAR® GPR Features

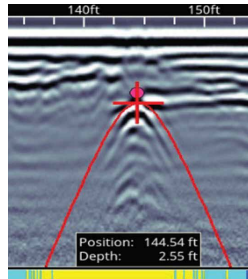
Rapidly locate **metallic** and **non-metallic** utilities

Enhance your productivity

Pinpoint Depth & Location



Easy Depth Calibration



No complex settings – Just press Start and push the cart.

Use hyperbola-fitting to ensure accurate depth measurements and backup over the target to display its location and depth.

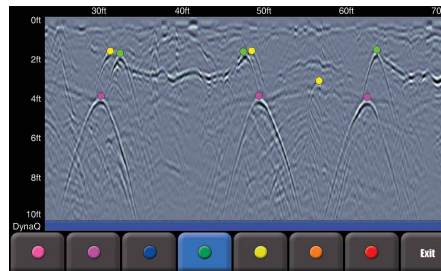
Dynamic Stacking (DynaQ®)

DynaQ automatically adjusts stacking (averaging) for the best data quality.



- White = No data (too fast!)
- Yellow = Moderate quality
- Light blue = Better quality
- Dark blue = Highest quality

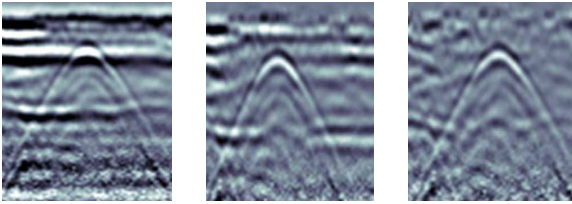
Color-coded field interpretations



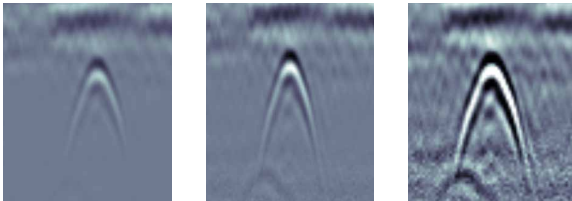
Classify your targets in real-time by selecting a color option and touching the screen.

Increase your target confidence in the field with image optimization

Preset Filters

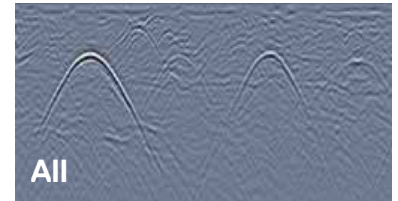
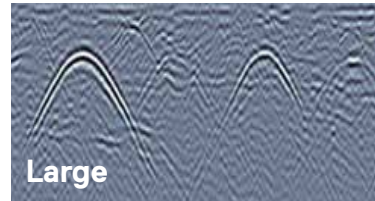
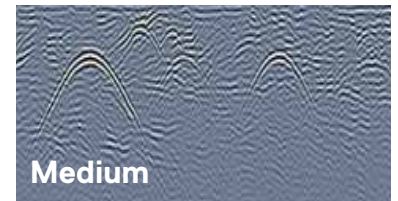
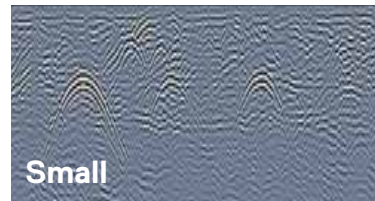


Adjustable Gain



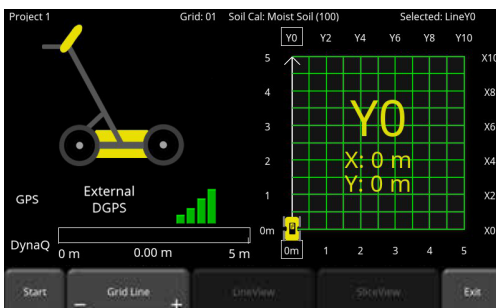
Optimize visibility of your targets with preset filters & gain.

Dynamic Target Enhancement (DynaT)



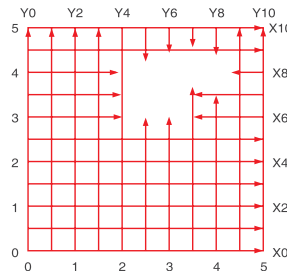
Enhance small, medium & large targets.

Grids & Depth Slices



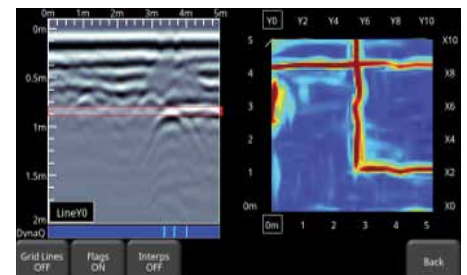
Flexible & guided grid collection

The LMX200 guides you through setup with pre-selected grid sizes. Stop lines early, or skip lines.



Obstacle avoidance

System guides data collection around an obstacle in your grid.

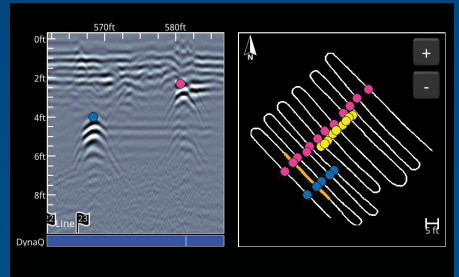


In-field Depth slices

Process grid data into depth slices and move down through your data to visualize targets at different depths. Depth Slice through multiple grids on-site.

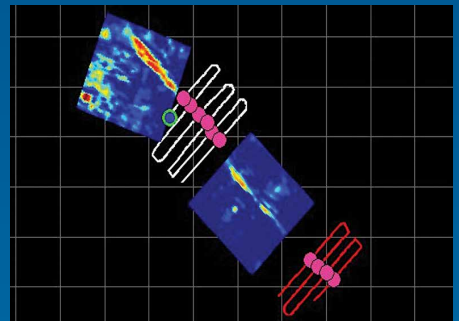
LMX150 FINDAR

Features unlocked with external GPS



SplitView – Real-time MapView during data collection

- Ensure full site coverage by visualizing your survey path
- See interpretations as you add them
- Review data for subtle targets that you may have missed
- Know your location, and go back to areas of interest



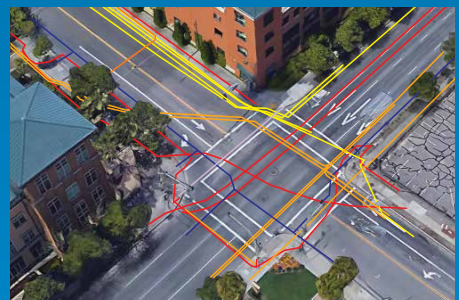
Visualize your entire survey in MapView

- See your survey path, depth slices, field interpretations and flags
- Slice through all depth slices simultaneously
- Toggle layers on and off to focus on elements of interest

Export geo-referenced data

	A	B	C	D	E	F
1	Tool	Position (m)	Depth (m)	Latitude	Longitude	GPS-Elevation
2	Point	0.72	0.18	38.8345202	-9.1821844	16.63
3	Point	0.83	0.7	38.8345201	-9.1821826	16.6
4	Point	1.12	0.75	38.8345187	-9.1821798	16.59
5	Point	1.63	0.19	38.8345172	-9.1821759	16.56
6	Point	1.63	0.68	38.8345172	-9.1821759	16.56

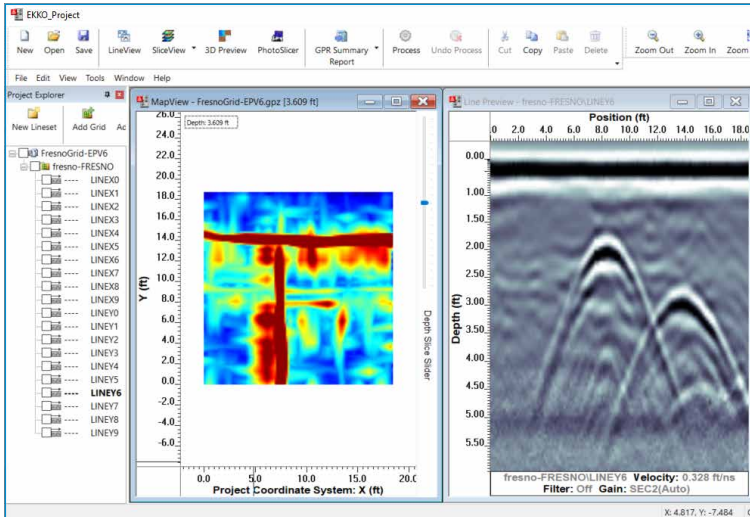
Spreadsheet (.CSV) file with flags and interpretations



KMZ output of lines, grid locations, interpretations, and screenshots

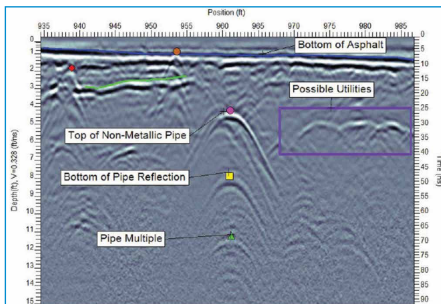
EKKO_Project™ Software

Visualize, Understand and Report your GPR results with the optional EKKO_Project™ PC Software

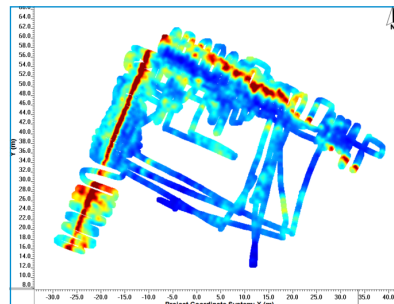


Core

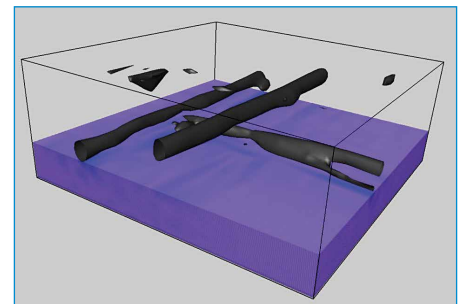
Organize your GPR data, photos and other files and save as a single project file. Easily create PDF reports of your findings.



Examine (Cross-sections)



Reveal (Depth Slices)



3D Reveal (3D Visualization)

Specifications

Weight & Dimensions	
Size: 115 × 55 × 90 cm (45 × 21 × 35 in)	
Weight: 19 kg (41 lb) (including battery)	
Display Unit size: 21 cm (8 in) diagonal	
Power	
12 volt sealed lead acid gel cell	
Battery Capacity: 9.0 Ah	Battery Weight: 3.6 kg (7.9 lbs)
Battery Life: 4-6 hours	Charger: 110-240V

Environmental & Temperatures	
Ruggedized, environmentally sealed unit and connections	
IP65	Operating temperature range: -40°C to +50°C (-104°F to 122°F)
Regulatory Specifications	
Meets FCC 15.509, IC RSS-220 and ETSI EN-302066	
Data Storage	Depth
230 km (143 miles) of data	Up to 3 meters (10 feet)

Useful resources available at: www.sensoft.ca

- Webinars and online resources (www.sensoft.ca/georadar/webinars)
- Training and events (www.sensoft.ca/gpr-training-events)

Our Mission

Provide best in class equipment and solutions, to prevent damage to critical infrastructure, manage assets and protect lives.

Our Vision

To be the world's leader in the management of critical infrastructure and utilities.

Our Locations



USA

Raymond, ME
Kearneysville, WV

Canada

Mississauga, ON



Europe

United Kingdom **HQ**
France
Germany
The Netherlands



Asia Pacific

India
China
Hong Kong
Indonesia
Australia

Visit: www.sensoft.ca Follow us on:    

Scan for more information

