

CONSTRUCTION-PRACTICE ZONING

Case Study



 **Sensors &
Software**

Roadmap survey

Historical records of construction and repair may not exist or be hard to locate. Noggin GPR systems enable highway engineers to easily assess subsurface conditions over vast lengths of road.

continued on page 2

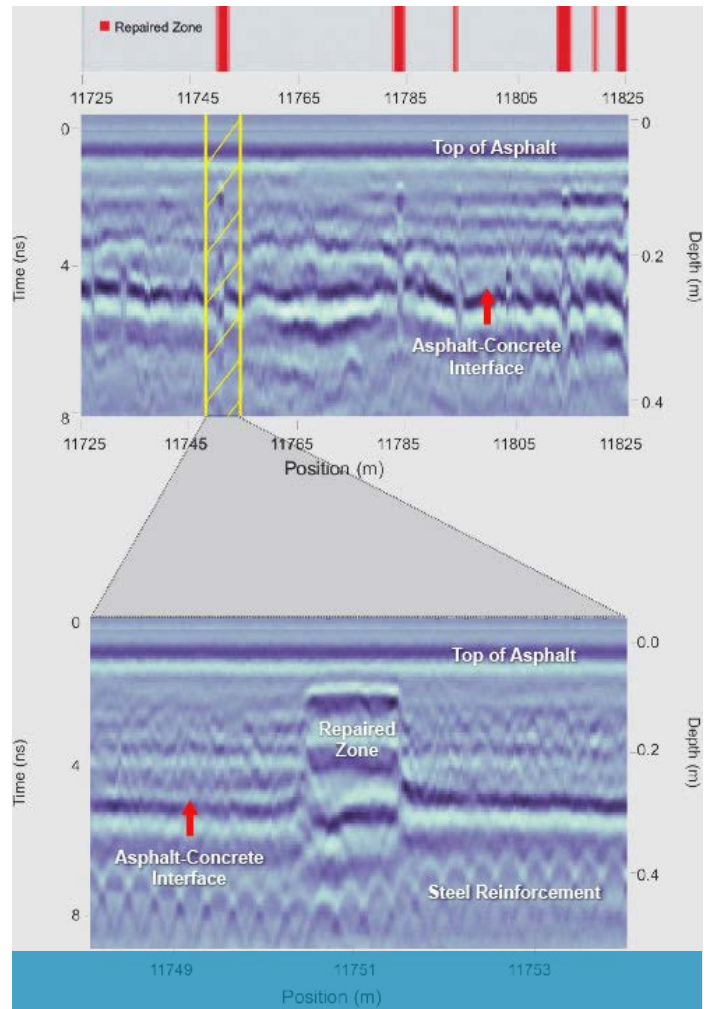


Google Earth map showing the location of GPR data

EKKO_Project Interpretation module enables zoning and layer thickness determination. The database can be used to create summary reports such as statistical tables or electronic files for export into Pavement Management Systems (PMS) and GIS systems.

Data in the figure to the right identifies zones, from the road section shown in the above Google Earth map, that may need further study. The figure also illustrates a zoom in on a critical area.

The zoning display at top shows where unusual features have occurred. Interactive software enables viewing at a variety of scales. A zoom in on the feature at 11750 m shows a former repair zone that has been overlain by newer asphalt.



Sensors & Software Inc.

1040 Stacey Court
Mississauga, ON
Canada L4W 2X8

+1 905 624 8909

+1 800 267 6013

sales@senssoft.ca
www.senssoft.ca

**subsurface
imaging
solutions**