

**SENSORS & SOFTWARE**  
from RADIODETECTION



# RESCUE RADAR™

**Find buried survivors in minutes**





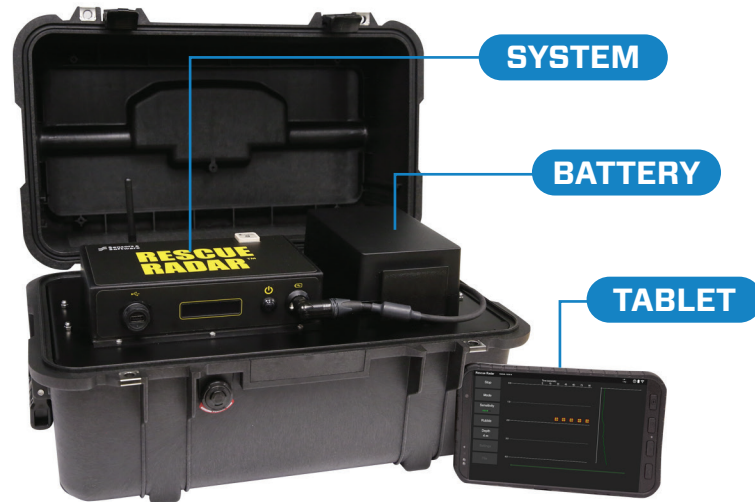
# RESCUE RADAR™

Rescue Radar™ is designed for rapid deployment by Search & Rescue teams all around the world to quickly find survivors trapped beneath the surface.

Determining the presence of life is of utmost importance following a disaster and Search & Rescue teams need to rapidly assess where to focus their resources in the initial hours following the catastrophe.

By making use of our patented ultra-wide bandwidth (UWB) antenna technology Rescue Radar™ is able to detect moving and immobile victims below the surface.

Rescue Radar™ comes standard with a tablet, system, battery and charger.



With minimal operator training, Rescue Radar™ can:



#### **Locate unconscious and conscious victims**

Our third generation Rescue Radar™ system is highly sensitive to detect slight motion and shallow breathing.



#### **Effectively operate in high noise and wind environments**

GPR is a reliable tool when operating in difficult environments.



#### **Seamlessly complement the use of canine and seismic rescue systems**

Augments search capabilities with a reliable and proven method that detects motion, such as breathing, within seconds.



**Find  
Survivors  
Trapped  
Beneath  
the Surface**

# RESCUE MODES

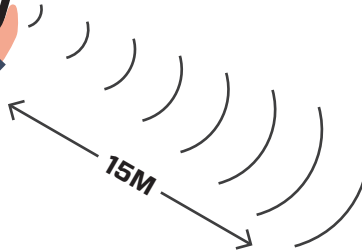
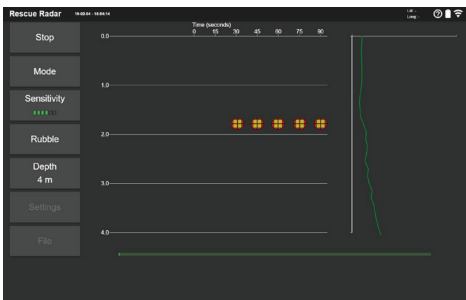
## BASIC MODE



## Locate victims Save lives

Easily toggle between two modes for optimal operation in all circumstances.

## TIME LAPSE MODE



## BASIC MODE

Allow first responders with minimal or no prior training with Rescue Radar™ to locate trapped victims. The interface shows a life status symbol on a scale to indicate the distance from Rescue Radar™ to the victim.

## TIME LAPSE MODE

Allows the operators to locate movement and monitor an area over a period of time to reduce false alarms. A consistent life status symbol over a number of cycles (time lapses) builds confidence for first responders that a victim is still alive; either conscious and moving or unconscious and breathing.



## Features

- Designed for the harshest environments: tough, weatherproof Pelican case
- Rugged tablet: meets military specifications for the toughest rescue conditions
- Extended battery life
- Uninterrupted wireless data collection: Rescue Radar™ continues to operate if Wi-Fi is interrupted and seamlessly reconnects to the control tablet when connectivity is restored with no data loss
- Adjustable depth of display to adapt to site conditions
- All in one package: the system operates in a transport case with no additional setup required
- No custom software required for operation: control the system and view results through a browser on the tablet
- Fast geotagged results offload onto USB or via Wi-Fi
- Low maintenance: always ready for deployment

Rescue Radar™ comply with the Industry Canada (IC), United States Federal Communications Commission (FCC), and European Technical Standards Institute (ETSI) Regulations for ultra-wide bandwidth (UWB) devices.

## Product Specifications

### Dimensions & Weight

**Size:** 530 x 325 x 325 mm

**Weight:** 7.9 kg (no battery) | 11 kg (with battery and tablet)

### Center Frequency

500 MHz

### Power

1.25 A @ 12V

**Battery:** Rechargeable sealed lead acid gel cell Life: 5 -8 hrs

**Capacity:** 9Ah

**Charger:** 110 -240 V for use all over the world

### Environmental

**Rescue Radar™ Electronics:** -40 to +50°C

**Display Unit:** -10 to +50°C

### Maximum Detection Depth (Material Dependent)

Selectable 2, 4, 8, 10, 20, 30 meters

### Maximum Control Wi-Fi Distance

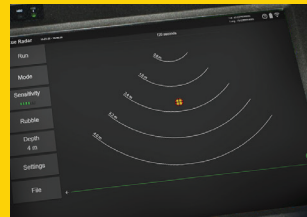
75m

### Tablet Operating System

Android

## Applications

- Urban Search & Rescue (USAR)
- Natural Disaster
- Terrorist Attack
- Mining disaster
- Structural Collapse



**SENSORS & SOFTWARE**  
from RADIODETECTION



**Sensors & Software Inc.**  
1040 Stacey Court  
Mississauga, ON  
Canada L4W 2X8

p. +1 905 624 8909  
+1 800 267 6013 (Toll free)

[www.sensoft.ca](http://www.sensoft.ca)