

pulseEKKO[®] PRO

by Sensors & Software Inc.



sub surface imaging solutions

For the GPR professional



Frequencies from
12.5 to 1000 MHz!

12.5 MHz

INNOVATION The pulseEKKO PRO ground penetrating radar family reflects Sensors & Software's commitment to continuous cutting-edge innovation. With unparalleled performance, a wide range of frequencies, and flexible deployment configurations, pulseEKKO PRO provides outstanding value for GPR professionals.

PERFORMANCE The pulseEKKO PRO system features:

- low noise, high accuracy digital acquisition directly at receiving antenna
- wide range of regulatory compliant transmitters
- computer controlled voltage and temperature-stabilized time and amplitude
- raw data recording to removable flash memory in an open standard format
- low power consumption

VERSATILITY pulseEKKO PRO's broad frequency range (12.5 to 1000 MHz) enables users to address any scale of GPR application from deep mineral exploration and glaciology to high resolution geotechnical investigations and concrete imaging. Analyze data and create presentation quality images with EKKO_View, EKKO Mapper and EKKO_3D.

FLEXIBILITY Ergonomic deployment configurations - Full Bistatic, Hand Tow, SmartCart, One-Man, Borehole and Multichannel - enable GPR deployment for reflection profiling, transillumination, or CMP/WARR surveys.

Quick release fastenings and interchangeable components enable rapid system reconfiguration.

Integrated support for GPS, odometers and fiducial markers with triggering from a wide range of inputs provides accurate spatial positioning.

CUTTING EDGE specifications:

- Maximum system performance: 186 dB
- Programmable time window: 500 ps to 200,000 ns
- Points per trace: 10 to 31,000
- Hardware stacking: $2^n - 1$ to 32,768
- Receiver Sensitivity: $1.5\mu\text{V}$ 1sb
- Data Recording: 16 bit
- Environmental: IP66



25 MHz



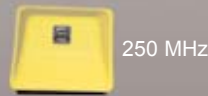
50 MHz



100 MHz



200 MHz



250 MHz



500 MHz



1000 MHz

Central Display & Control



Digital Video Logger (DVL) & Control Module

Configurations

One-Man



Single person operation for surveying in moderate to rough terrain.

SmartCart



Fast surveying to cover large flat open areas.

Borehole



Subsurface measurements in shallow boreholes.

Full Bistatic



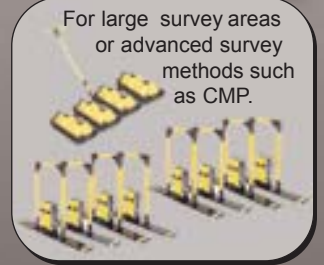
Variable antenna separation and orientation to conduct transillumination and multi-offset surveys or to work in rough, poorly accessible areas.

Hand Tow



Rapid GPR profiling over smooth to moderately rough surface areas.

Multichannel



For large survey areas or advanced survey methods such as CMP.

Advanced Survey Methods



Transillumination



CMP/WARR

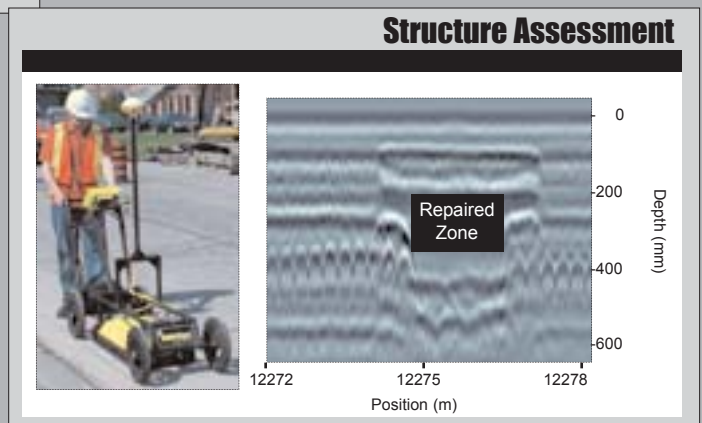
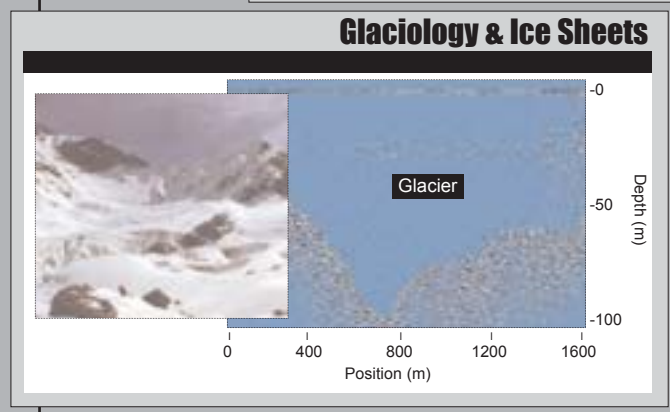
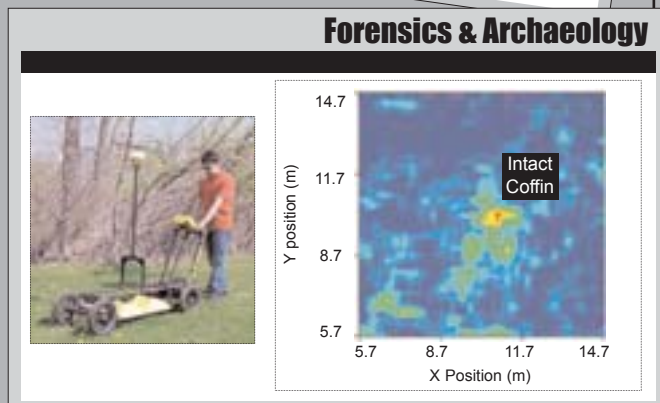
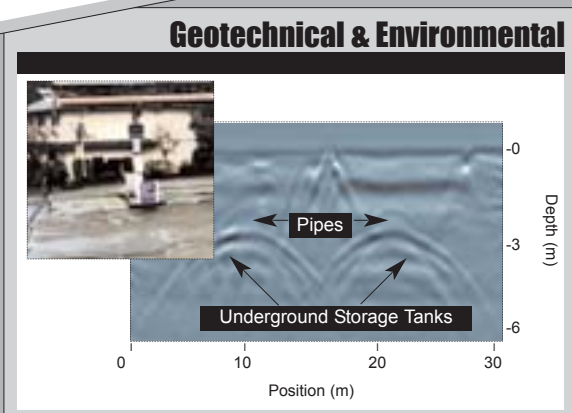
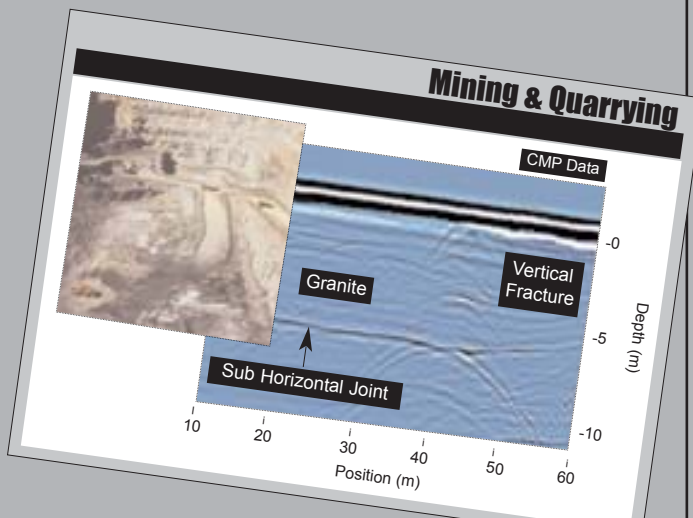
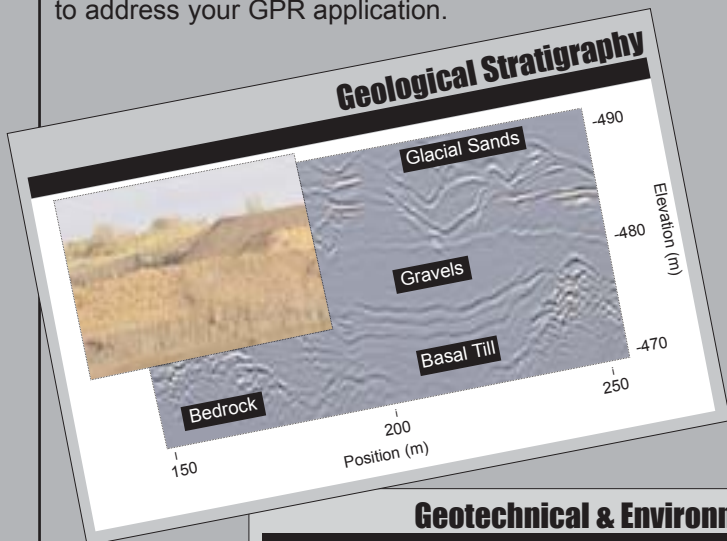


Transillumination

pulseEKKO PRO applications include investigations for: Mining & Quarrying, Geotechnical & Environmental, Forensics & Archaeology, Glaciology & Ice Sheets, Structure Assessment.

Contact one of our professional staff about the best configuration to address your GPR application.

pulseEKKO[®] PRO



Sensors & Software Inc. is recognized globally as the technical leader in GPR products. Our name is synonymous with technical excellence, continuous innovation and responsive customer service. Our products and systems have been designed for a broad range of customers and markets. UWB emission regulations limit offering some product options in some geographic areas.

All statements, technical information and recommendations related to Sensors & Software Inc.'s products are based on information believed to be reliable, but the completeness thereof is not guaranteed. Before utilizing the product, the user should determine the suitability of the product for its intended use. The statements contained herein are made in lieu of all warranties, expressed or implied, including but not limited to the implied warranties of merchantability and fitness for a particular purpose which warranties are hereby expressly disclaimed.

sub surface imaging solutions

Sensors & Software Inc.
1040 Stacey Court
Mississauga, ON L4W 2X8 CANADA

Tel: (905) 624-8909
Fax: (905) 624-9365

Email: sales@sensoft.ca
Website: www.sensoft.ca

